

Devon and Cornwall Full Police Authority Meeting**16 February 2007**

Open for the purposes of FOI

Report of the Chief Constable

2007/8 Performance Plan Targets**Recommendation(s):**

- i. That the Committee accept the proposed targets for 2007/8**

SALIENT POINTS

1. The table below shows the timetable for production of the Force targets for 2007/8. At this stage the targets are presented for discussion prior to final sign off at the full police authority meeting.

PEPG – agreement on draft targets levels for 2007/8	10 January 06
Force Management Board - Draft Target recommendations for submission to Police Authority	16 January 07
Policy Authority Seminar – targets and budget/council tax precept	25 January 07
Full Police Authority Meeting – targets sign off	16 February 07
Force Performance & Tasking Board – noting of targets	27 February 07
Submit APP/SP to Home Office	28 February 07
Police Authority Planning & Consultation Committee – final sign off of APP & SP by Police Authority	22 March 07
Publish APP & SP on Force/Police Authority websites [Initial 9 month figures]	31 March 07

2. The table below gives the proposed targets for 2007/8. The local domain requires gradings to be set such that poor (performance lower than the baseline), good and excellent can be set for assessment under PPAF. There are a number of criteria required to be assessed when setting these grades. These are explained below. The proposed local domain targets thus have two levels given.
3. The local domain targets should be set using the following criteria.
1. They should have been set with due acceptance of
 - Community consultation
 - Partner consultation
 - Force Control Strategy
 2. They cannot replicate any SPI
 3. They must have a baseline measure
 4. They must be directionally un-ambiguous (i.e. success can be measured)
 5. They must be easily measured
4. There need to be boundaries set for poor, good and excellent levels of performance, such that gradings under PPAF can be ascertained. The boundaries are to be set using:

NOT PROTECTIVELY MARKED

Poor performance: This should be the year end (05/06) baseline. Any deterioration in performance from the baseline would result in a poor grading under PPAF

Fair performance: This would be attained if year end levels were an improvement over the baseline year but below the target set for good performance.

Good performance: These are generally set as midway between poor and excellent.

Excellent performance: Stretch targets are proposed in the APA guidance, such that if achieved the PI would be graded as excellent in the PPAF assessment. A stretch target is defined as a target where there is 1 in 5 chance of attainment.

5. The proposed targets take this criteria into account, with levels proposed using a combination of
 - a) Trend analysis
 - b) Projection and Forecasting of future performance
 - c) Baseline against family and national position
 - d) Long term force objectives
 - e) Acceptable levels of performance outcomes
6. The targets within the Reducing Crime and Promoting Public Safety domains are delivered in partnership with other agencies.

NOT PROTECTIVELY MARKED

DOMAIN: Citizen Focus
Target 1 - To exceed an 82% level of service users who are satisfied overall with the service provided by the police.
Target 2 - To exceed an 82% level of victims of racist incidents who are satisfied with the overall service provided by the police.
DOMAIN: Reducing Crime
Target 3 - To achieve a reduction of at least 5% in BCS comparable recorded crime.
DOMAIN: Investigating Crime
Target 4 - To exceed a 34% increase in the number of offences brought to justice.
Target 5 - To exceed a 27% sanction detection rate for total crime.
Target 6 - To exceed £2.3 million in the amount of assets recovered as part of the proceeds of crime act.
Target 7 – To exceed a 5% increase in the total detection rate for domestic violence
DOMAIN: Promoting Public Safety
Target 8 - To reduce the number of people killed or seriously injured in RTCs, by a minimum 20 people.
Target 9 – To exceed a 10% increase in the sanction detection rate for “major crime”.
DOMAIN: Providing Assistance
Target 10 - To exceed 90% of 999 calls answered in 10 seconds.
Target 11 - To exceed 90% of non-emergency calls answered in 30 seconds
DOMAIN: Resource Usage
Target 12 - To exceed £X million of efficiency savings for reinvestment and in overall terms exceed £X million in cashable gains
DOMAIN: Local Domain
Target 13 - To exceed 62% of uniformed operational officers time spent on visible policing activity. (Excellent local domain grading 63%)
Target 14 - To reduce anti-social behaviour through achieving a reduction of at least 3% for violent crime in a public place. (Excellent local domain grading 5%)
Target 15 - To reduce anti-social behaviour through achieving a reduction of at least a 2% in criminal damage. (Excellent local domain grading 4%)
Target 16 - To increase the percentage of the population who agree that “the Police in this area are tackling the things that matter in this community” by at least 3%. (Excellent local domain grading 6%)

4. The attached appendix gives background information as to the level of targets set out above.

Contact:

Dr Richard Bullock

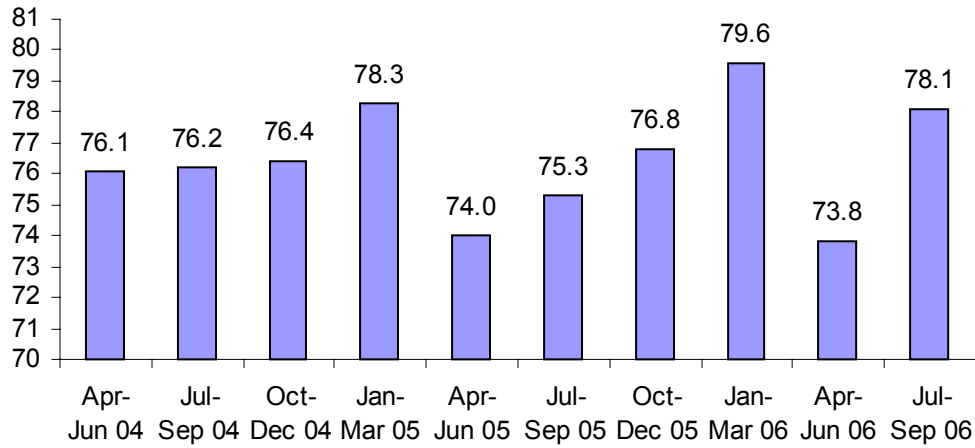
Force Performance Analyst

Tel: 01392 452812

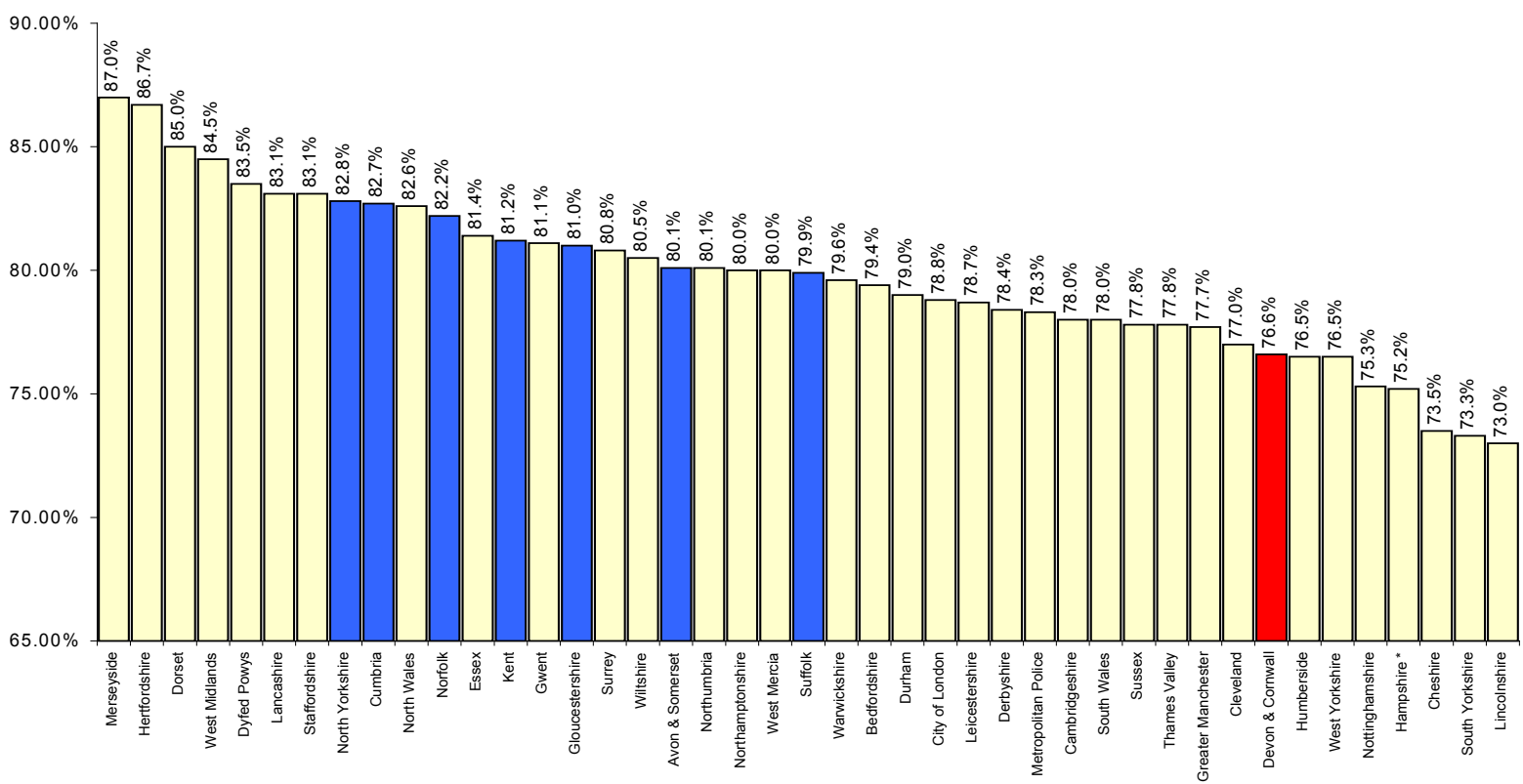
APPENDIX A

Target 1 - To achieve at least an 82% level of service users who are satisfied overall with the service provided by the police.

Current Performance



National and Family Position

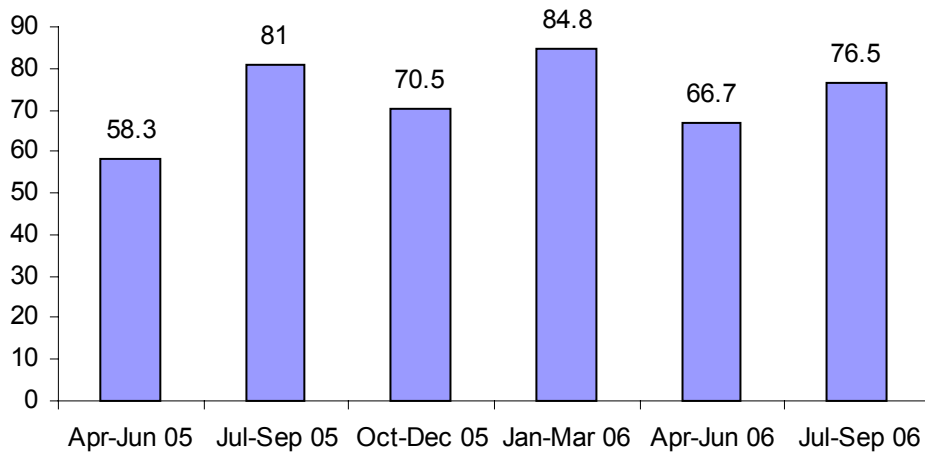


MSF average: 80.4%

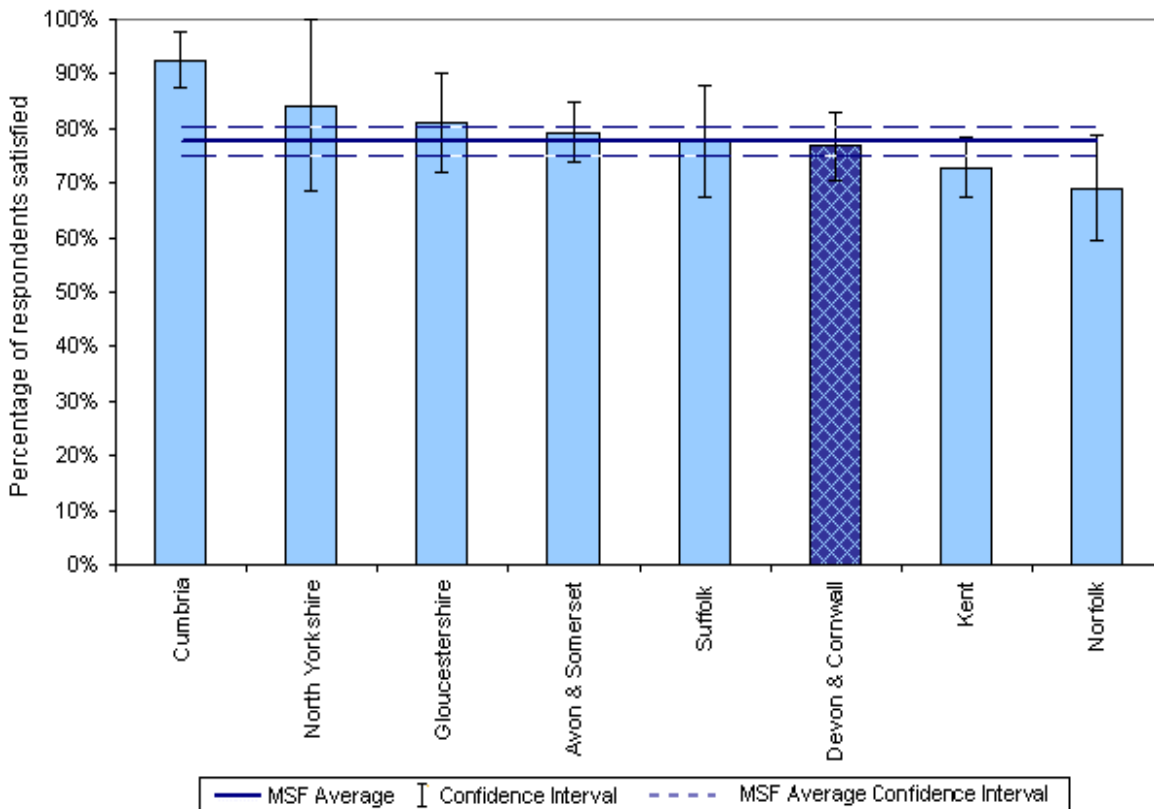
Given long term objective, family position and national focus in this area of performance propose an 82% target level

Target 2 - To achieve at least an 82% level of victims of racist incidents who are satisfied with the overall service provided by the police.

Current Performance



Family Position

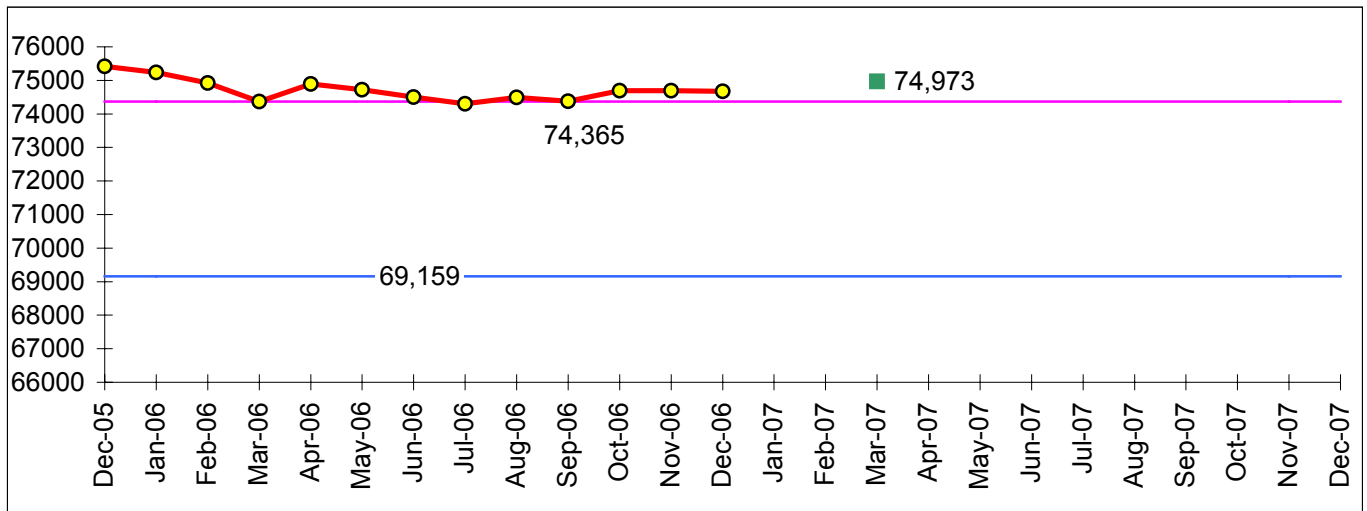


MSF average: 77.8%

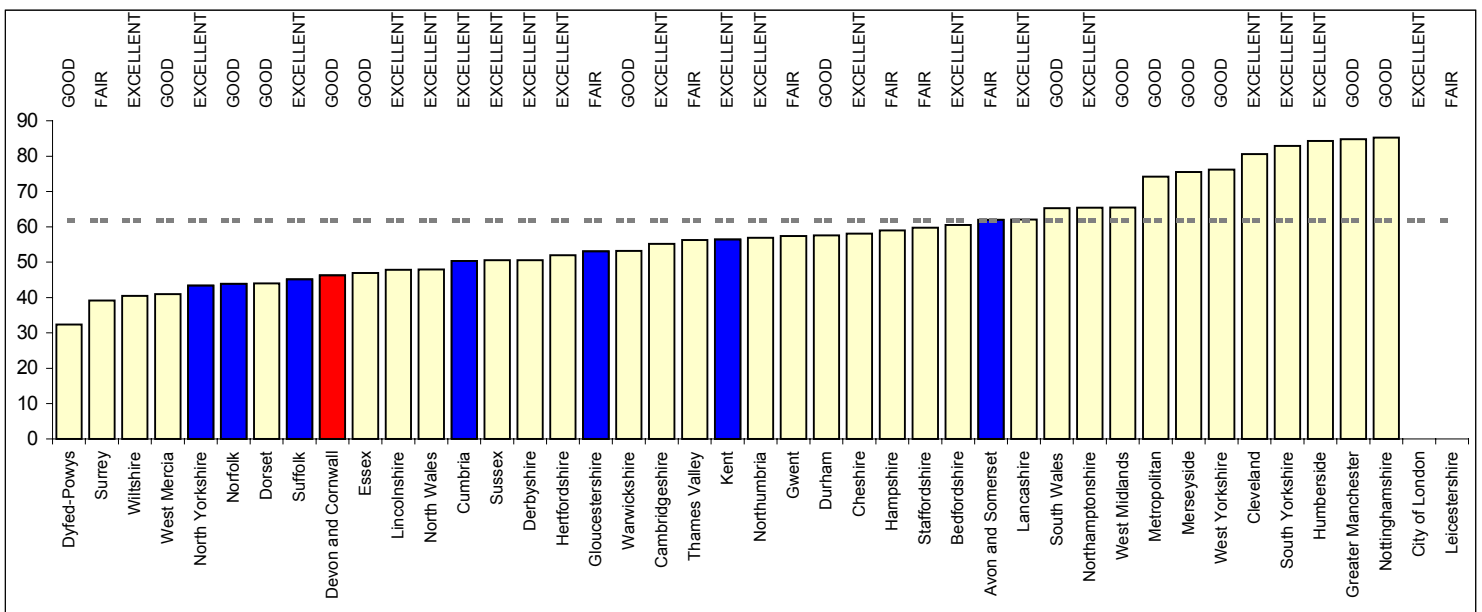
Given requirement for target 1 consistency, family position and current performance propose an 82% target level

Target 3 - To achieve a reduction of at least 5% in BCS comparable recorded crime

Current Performance



National and MSF Position

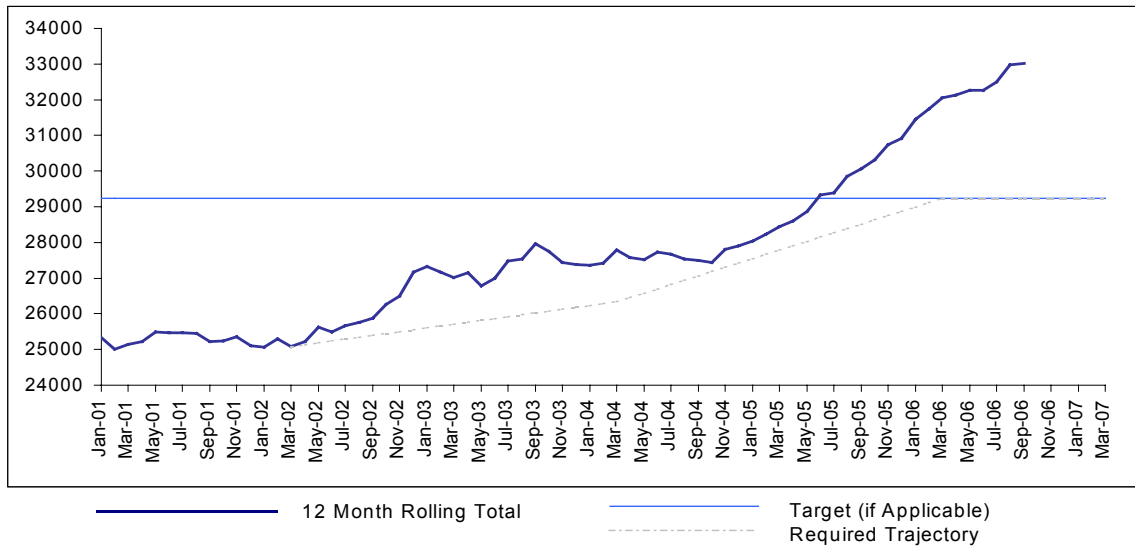


Comments

This target is part of the 3 year PSA target for a 15% reduction in BCS comparable crime by 2007/8. In 2005/6 the force was on target to achieve this, although performance in the past year has been stable, making achievement of such a target unrealistic in the final year. If accepted to attain, a target of 15% would be required. This is thought not to be SMART. Hence it is proposed that the Force set a target of a 5% reduction.

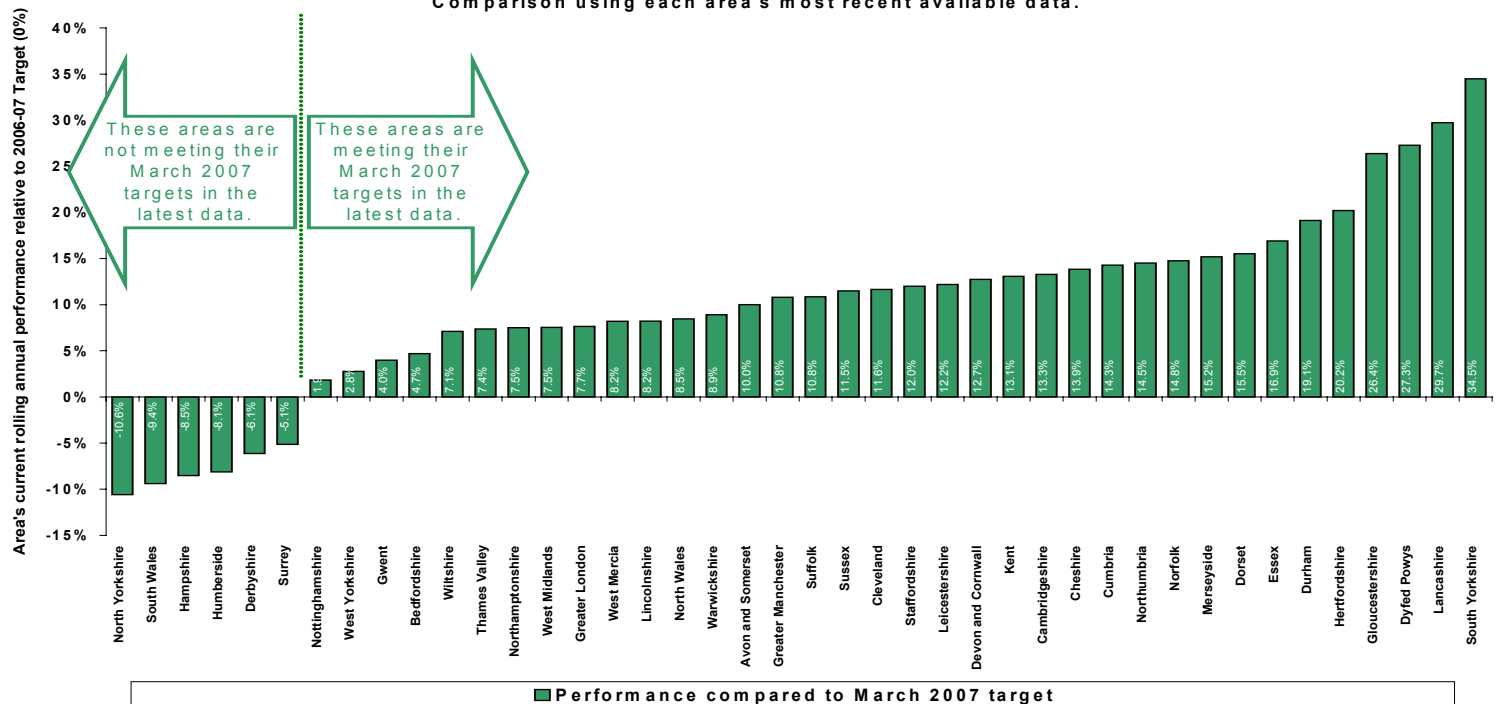
Target 4 - To exceed a 34% increase in the number of offences brought to justice

Current Performance



National Position

Chart 1.5 - OBTJ performance against March 2007 Target. Comparison using each area's most recent available data.

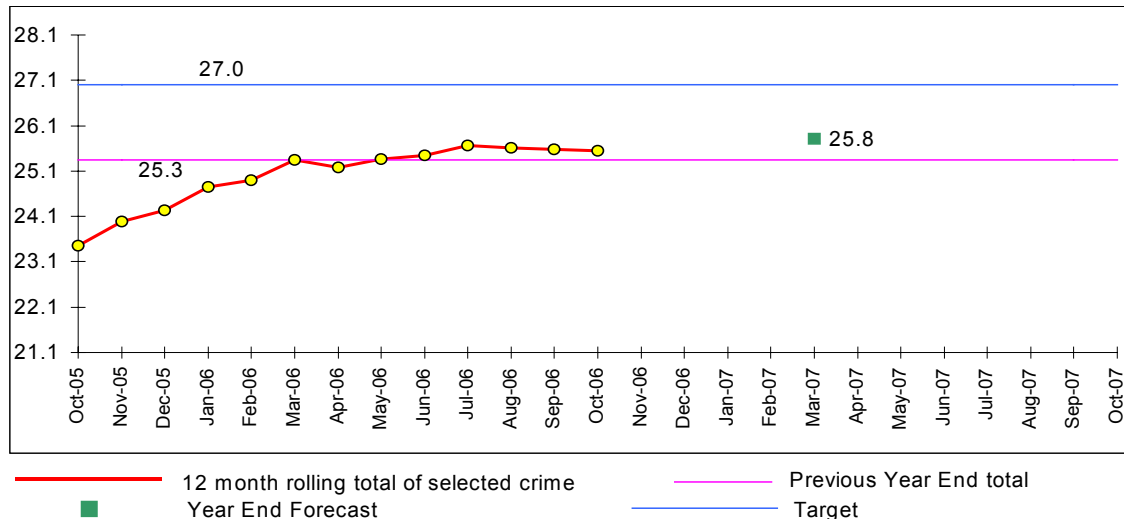


Comments

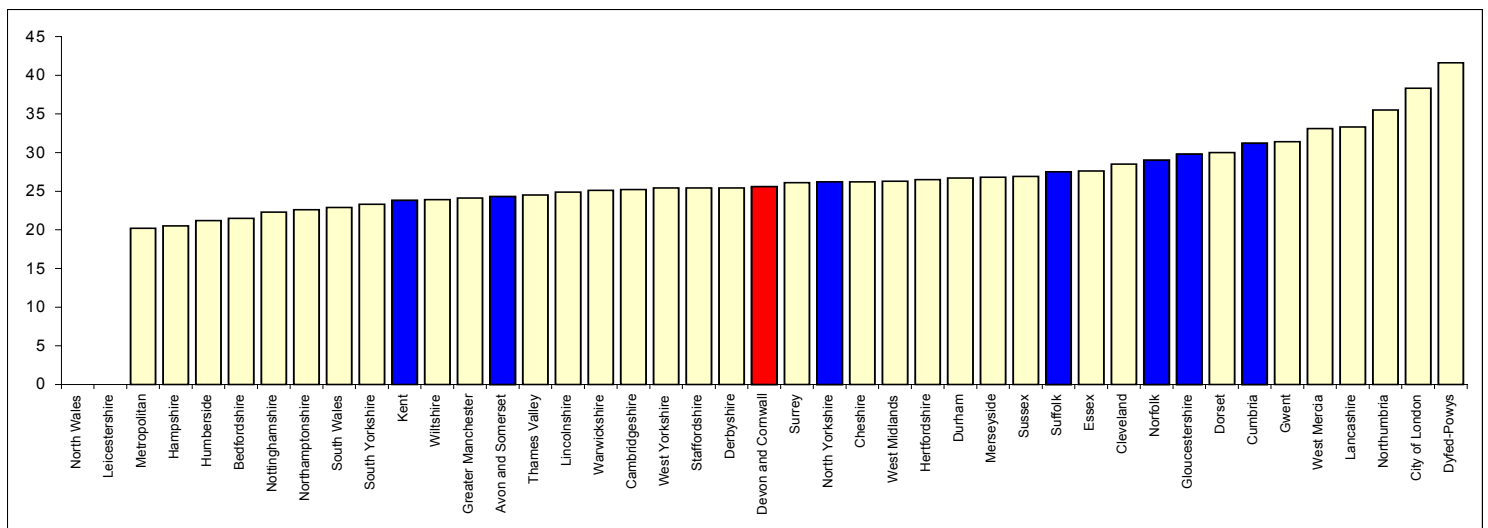
The value proposed under the LCJB working is to reach 31,992 OBTJ (as part of the longer term PSA target). Over the 2001/2 baseline of 25,007, this is an increase of 28%. Current performance is 33,014 (an increase of 32%). Given this and the increase in sanction detection targeted, an increase of 34% over baseline (to 33,510 OBTJ) would appear realistic. Assuming stable crime levels, this would result in 27% of crimes resulting in an OBTJ.

Target 5 - To exceed a 27% sanction detection rate for total crime

Current Performance



National and Family Position



MSF Family Average: 26%

Comments

Given long term strategic objective, current performance (and ongoing focus in this area), and family position, it is proposed that a 27% target be set next year.

NOT PROTECTIVELY MARKED

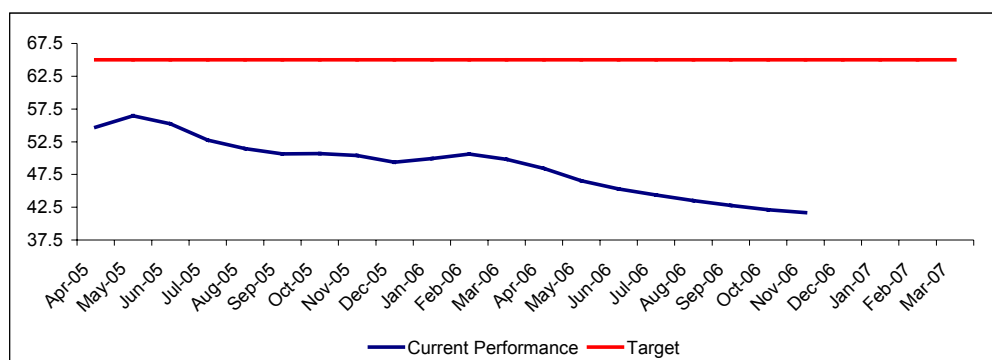
Target 6 - To exceed £2.3 million in the amount of assets recovered as part of the proceeds of crime act

The Police/CPS element of the volume and value measures for 2007/08 has been calculated using a new method which will give each LCJB a percentage of the national target based on the percentage of the population living within its police force area. This will be subject to the proviso that no area should be offered a decrease from its current value target. Using this method, some areas are likely to see a large percentage increase in volume and/or value.

The proposed target from the national criminal justice board is £2.3 million.

Target 7 – To exceed a 5% increase in the total detection rate for domestic violence

Current Performance

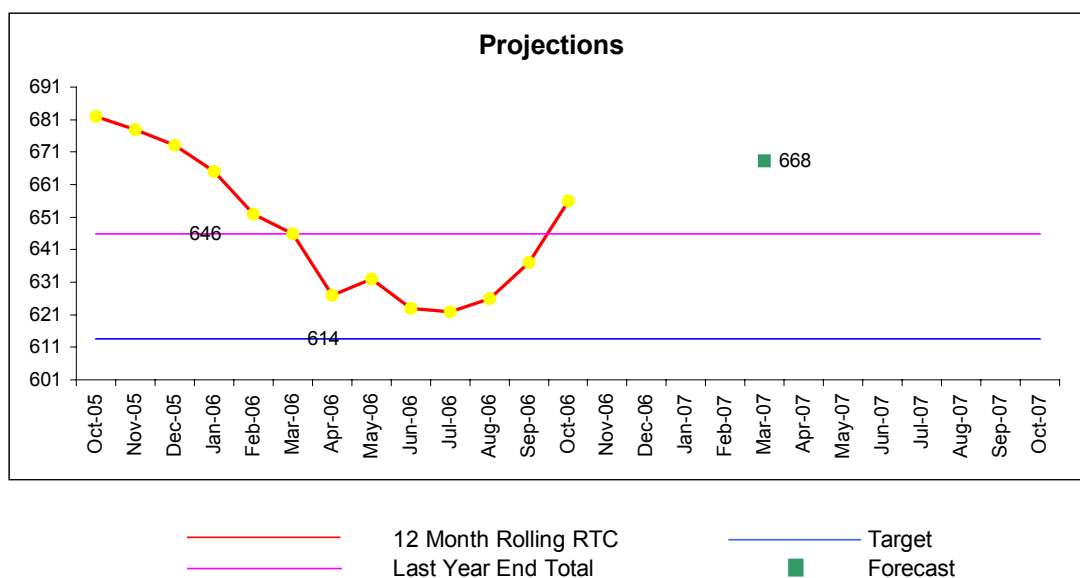


Comments

Current trends indicate a falling trend in detection, although this has stabilised in the last month. It is felt that a 5 percentage point increase in total detection over year end performance would be suitable, reversing the current trend and moving towards previous out-turns.

Target 8 - To reduce the number of people killed or seriously injured in RTCs, by a minimum 20 people.

Current Performance



ACPO 10 Year target (40% reduction). Current performance 38% reduction.

Comments:

Given near achievement of this target, but accepting current trends, it is proposed that a 3% reduction target should be set, but this be given in terms of people KSI not a percentage.

Target 9 – To exceed a 10% increase in the sanction detection rate for “major crime”.

Calculated from following codes

Violence against the Person

1	Murder
2	Attempted Murder
3	Threat or Conspiracy to Murder
4/1	Manslaughter
4/2	Infanticide
4/3	Child Destruction
4/4,6	Causing Death by Dangerous Driving
4/7	Causing or Allowing Death of Child or vulnerable Person
5	Wounding or Other Act Endangering Life
6	Endangering Life at Sea

Sexual Offences

19A	Rape of a Female - wef May 2004 split into:
19C	Rape of a Female aged 16 and over
19D	Rape of a Female Child under 16
19E	Rape of a Female Child under 13
19B	Rape of a Male - wef May 2004 split into:
19F	Rape of a Male aged 16 and over
19G	Rape of a Male Child under 16
19H	Rape of a Male Child under 13

ROBBERY

34A	Robbery of Business Property
-----	--

CRIMINAL DAMAGE

56/1	Arson (endangering life)
------	--

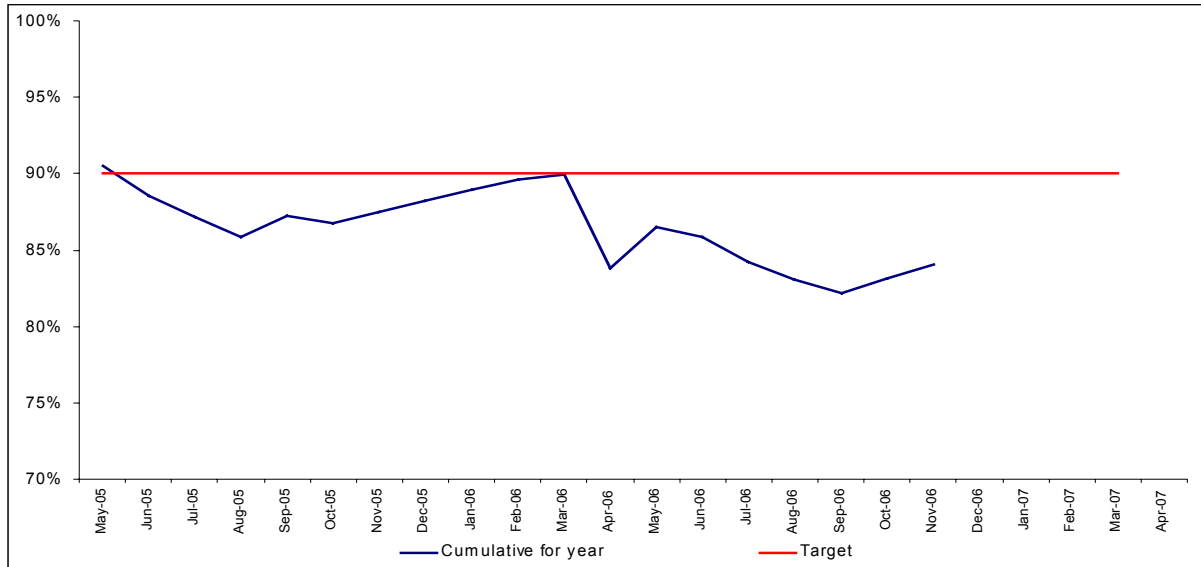
Comments:

It is believed that in the next set of PSA targets something around ‘major crime’ detection will be set (although it is not known the exact calculations of serious crime). As such, and given the drive around protective services, it is felt that a target in this area should be set.

Using the above definition, this target is driven by certain indicators above, which have a low detection rate (particularly rape of a female) and partially wounding and threats to kill. At present the total sanction detection rate for the combination of these offences is 34%. It is thus proposed that a 10% increase in the year end out-turn figure would be a challenging target to bring the detection rate up towards acceptable levels.

Target 10 - To exceed 90% of 999 calls answered in 10 seconds

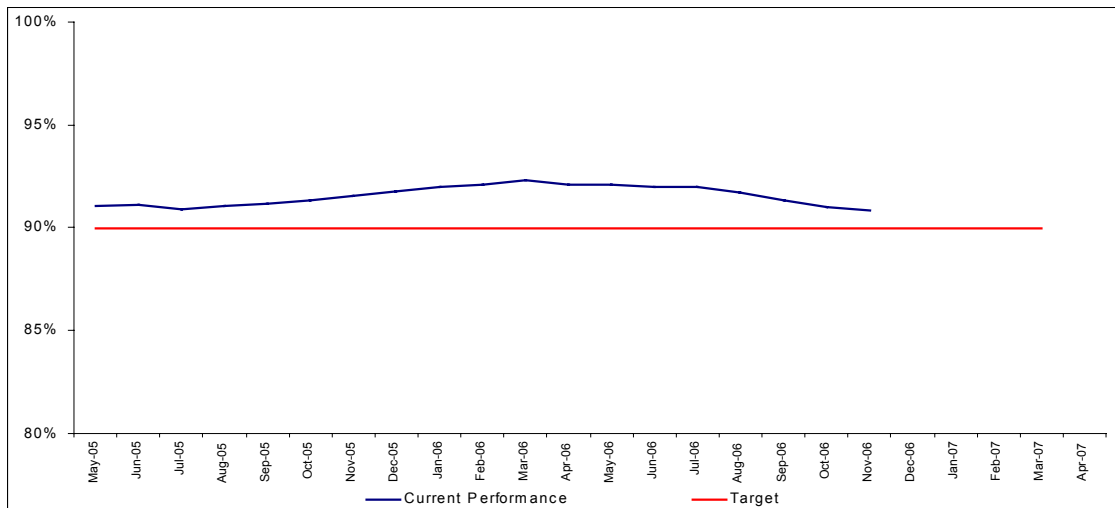
Current Performance



Comments:

At present this target is not being achieved, although recent months and weeks are showing improved performance. A 90% target is thus proposed.

Target 11 - To exceed 90% of non-emergency calls answered in 30 seconds



Comments:

At present this target is being achieved, although recent months are showing a slight declining performance trend. A 90% target is thus proposed.

NOT PROTECTIVELY MARKED

Target 12 - To exceed £X million of efficiency savings for reinvestment and in overall terms exceed £X million in cashable gains

This target will be set at 3% (mandated) dependent on the final budget, with half required to be cashable gains.

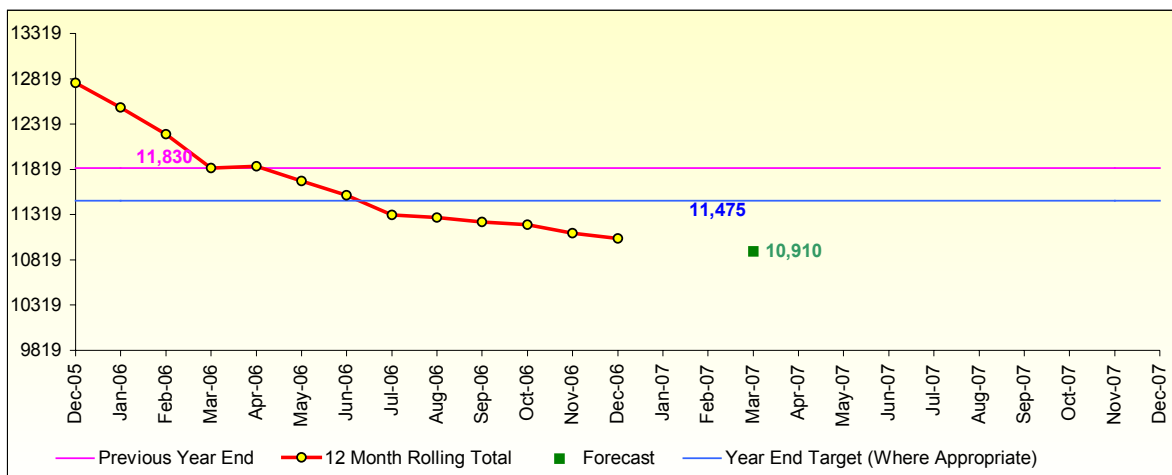
Target 13 - To exceed 62% of uniformed operational officers time spent on visible policing activity. (Excellent local domain grading 63%)

Current Performance

In 2006/7 a 61% of officer time spent on visible policing activity. (The target is measured via ABC and the amount of time uniformed officers (including PSCOs) spend out of the station and on certain roles when in the station. A 1% increase in this measure requires an extra 15 minutes of time to be spent on visible policing activity per officer per day.

Target 14 - To reduce anti-social behaviour through achieving a reduction of at least 3% for violent crime in a public place. (Excellent local domain grading 5%)

Current Performance:



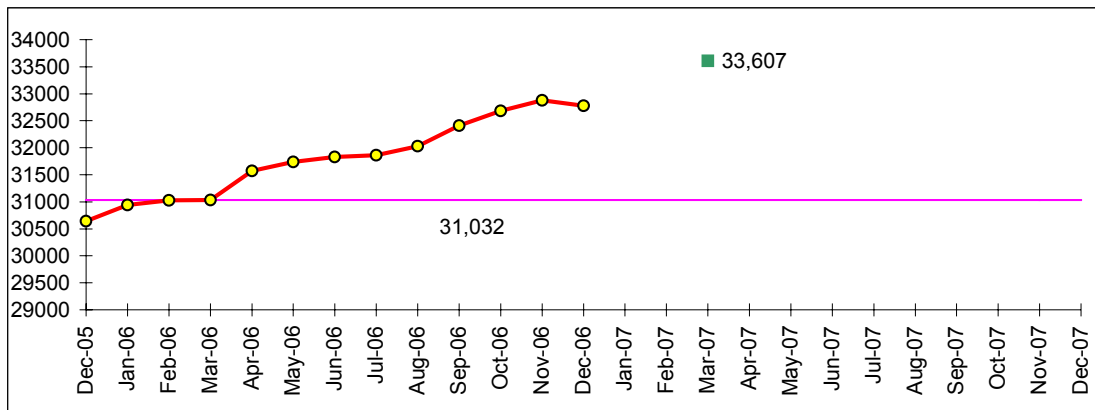
	Total	Last Year End	% Change
Current 12 Month Rolling Total	11,054	11,830	-6.6%
Forecasted Total	10,910	11,830	-7.8%

Comments:

Given current trends, the required local focus on anti-social behaviour, and the level of magnitude of this indicator it is proposed a 3% target should be set.

NOT PROTECTIVELY MARKED

Target 15 - To reduce anti-social behaviour through achieving a reduction of at least a 2% in criminal damage. (Excellent local domain grading 4%)



Comments:

Given current trends, the required local focus on anti-social behaviour, and the level of magnitude of this indicator it is proposed a 2% target should be set.

Target 16 - To increase the percentage of the population who agree that “the Police in this area are tackling the things that matter in this community” by at least 3%. (Excellent local domain grading 6%)

This would be a new indicator for the Force in 2007/8, measured via local public surveys. It is the preferred national indicator for Neighbourhood Policing. There are survey result differences when measured by the BCS (as would be the national figure) and results from our own survey. This is being reviewed at present and is likely to be due to sampling differences. It is proposed that our thrice yearly public survey should be used to measure (as results can be drilled down to a local area). Given focus into 2007/8 in neighbourhood policing an increase of 3% in the year end out-turn level is proposed.